

REMOTE CONTROL SCP-R5

Touch Line

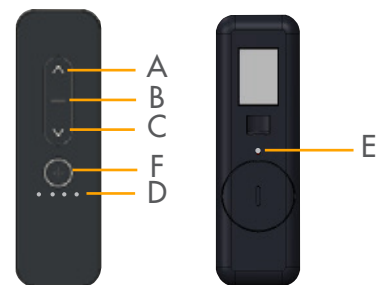
The remote control is a short range emitter used in various applications such as blinds, shutters, projection screens, awnings and more. Can be used with all Lianda RTL receivers

(Some receivers have limited functions, please refer to the receiver instructions for more information).



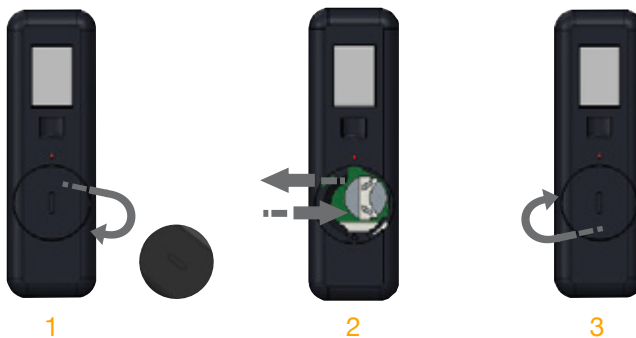
BUTTONS

- A.** LED (5 Channel).
- B.** Up (Control button).
- C.** Stop (Control button).
- D.** Down (Control button).
- E.** Programming
- F.** Select button (5 channels).



SCP-R5

OPEN THE TRANSMITTER / REPLACE THE BATTERY



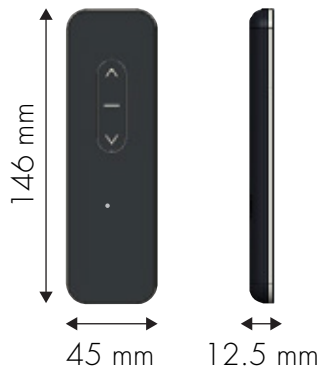
1. Open the back cover.
2. Remove the old battery and insert a new battery (1-5 channels: CR2032 Lithium 3V).
3. Close the back cover.

TECHNICAL INFORMATION

Frequency	433.92 MHz
Maximum transmission consumption	- 10 dB
Temperature	- 10°C a 50 °C
Battery Type	CR2032 Lithium 3V CD (1&5 channels)
Insulation class	II (complete installation)

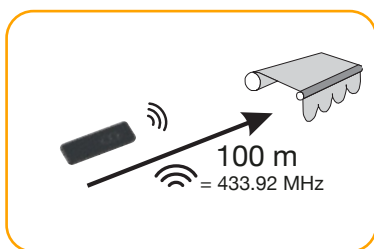
DIMENSIONS

General dimensions

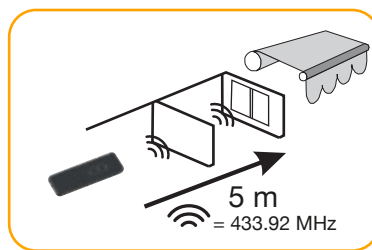


TRANSMISSION RANGE

Outdoors



Going through two walls
concrete



The SCO-R5 remote controller is capable of controlling 5 group of motors (RTL Motors or motors equipped with RTL receivers).

Remote controls can be used to set limits to radio RTL motors with electronic limit adjustment.