

NO25 INBAT MOTOR



SAFETY AND RESPONSIBILITY

Please read the safety instructions before beginning the installation. If these instructions are not followed, the manufacturer's responsibility and guarantee will be lost. The manufacturer is not responsible for changes in regulations and standards, after the publication of this manual.

1) This product can be used by children over 8 years of age and persons with reduced physical, sensory or mental capabilities or lack of experience and knowledge; whether they have been given supervision or instruction concerning use of the appliance in a safe way and whether they understand the hazards involved. Children should not play with this product. Maintenance and cleaning must not be carried out by children without supervision.

2) The product must only be supplied with safety extra low voltage corresponding to that indicated on the product.

3) If the power cord is damaged, it must be replaced by the manufacturer, its service agent or qualified personnel in order to avoid a hazard.

4) Warning: The product must be disconnected from its power source during maintenance, cleaning and component replacement.

5) The A-weighted sound pressure emission level of the engine is less than 70 dB(A).

6) Do not allow children to play with fixed controls. Keep the remote control away from children.

7) Check installation periodically for imbalances and signs of wear or damage to cables, springs and brackets. Do not use it if it needs to be repaired or adjusted.

8) Do not operate when maintenance or window

cleaning is being performed in the vicinity.

9) Observe the movement of the product at all times and keep people away until the product is completely closed.

10) Before assembling the motor, remove any unnecessary cords or components. Also disable any equipment that is not required for the operation.

11) The weight and dimensions of the carrier product must be compatible with the rated torque and operating time of the motor.

12) Fixed controls must be clearly visible after installation.

13) The characteristics of the finished product must be compatible with the load capacity and operating time of the motor.

14) A multi-pole safety switch must be incorporated into the electrical network in accordance with the wiring regulations.

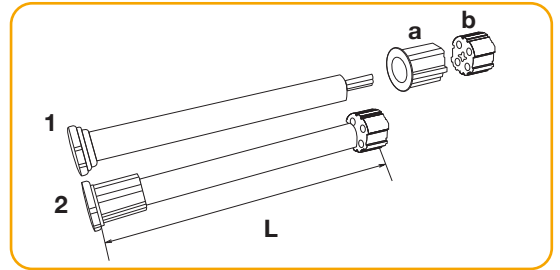
15) Never submerge the product in liquid, avoid impacts, do not drill or make holes on it, do not drop it.

16) The manufacturer declares that this product is in compliance with the essential requirements and other provisions of Directive 2014/53/EU.

INSTALLATION

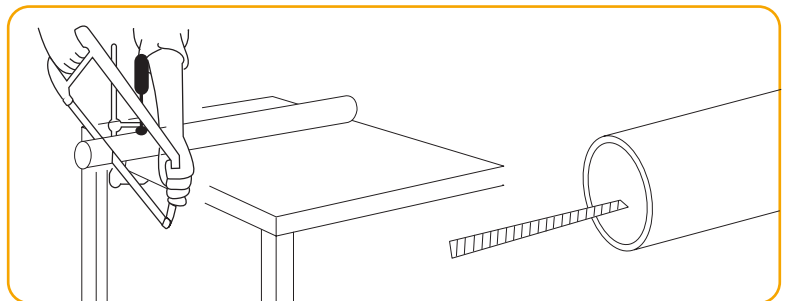
Engine Preparation

- 1) Place the crown (a) and the drive wheel (b) on the engine.
- 2) Measure the distance (L) between the end of the drive wheel and the end of the motor head.



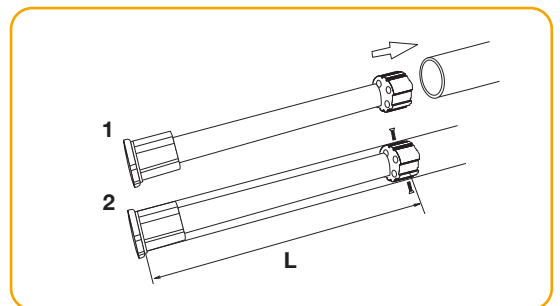
Tube Preparation

- 1) Cut the tube to the desired length.
- 2) Deburr tube and remove debris.



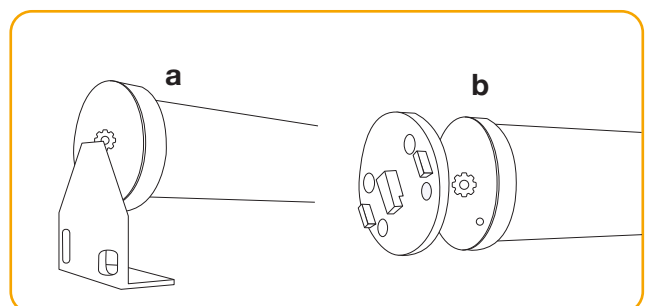
Motor / Tube Assembly

- 1) Insert the motor inside the tube. Insert the drive wheel by aligning the wheel with the tube profile. Insert the motor half, then slide the ring gear over the motor and insert it into the tube. Finally, press the motor inside the tube.
- 2) If necessary, fix the tube to the drive wheel with self-tapping screws or steel rivets depending on the dimensions (L).



Mounting the motor on the supports

- a) Standard support.
- b) Motor plate for particular support.





TIPS AND RECOMMENDATIONS DURING THE INSTALLATION.

Questions related to the NO25 INBAT engine

| Observations | Possible causes | Solutions |
|---|---|---|
| Engine does not run | Engine battery level is low and requires charging. | Charge the battery. |
| | The battery level of the remote control is low. | Check the battery and replace it, as necessary. |
| | The remote control is not compatible or programmable. | Check compatibility and replace remote as needed. |
| | Thermal protection has been activated. | Wait for the engine temperature to drop. |
| The finished product is stops quickly. | The limits were programmed incorrectly. | Reset the limits. |
| | The finished product exceeds the recommended weight limit. | Replace motor. |
| | Engine battery level is low. | Charge the battery. |
| The red led flashes slowly for 3 seconds. | Engine battery level is low. The battery level is less than or equal to 5%. | Charge the battery. |

PROGRAMMING

1. Activate the engine

The engine is in factory condition when it is first unpacked. Activate the motor by briefly pressing the PROG button located on the motor head or connect the battery charger, the motor will perform 3 cycles.

If you want to return the motor to factory conditions, press the Raise, Stop and Lower buttons simultaneously, until the motor cycles.

Note: feedback = cycle: short movement of the motor up and down.

2. Initial programming

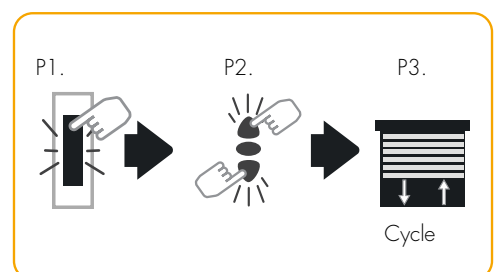
The programming procedure indicated below must be carried out step by step.

Register a remote

Step 1. Activate the motor.

Step 2. Press the UP and DOWN buttons on the remote at the same time.

Step 3. The motor will cycle and confirm that the remote has been temporarily stored in the memory of the tubular motor.



Note: The procedure must be performed within 15 minutes after the motor has been activated or reset.



CHANGING THE DIRECTION OF ROTATION

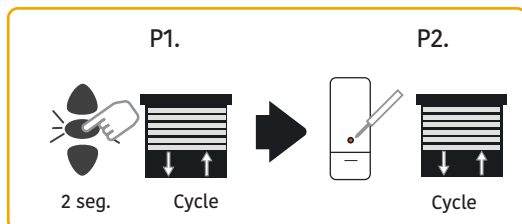
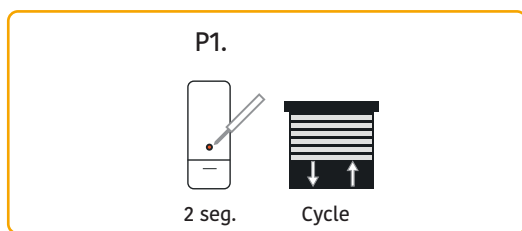
If the direction of rotation is correct.

Step 1. Use a thin tool to press the PROG button for two seconds, until the electric motor cycles.

If the direction of rotation is incorrect.

Step 1. Press the STOP button for two seconds or until the electric motor cycles, the direction of rotation has been reversed.

Step 2. Press the PROG button for two seconds or until the electric motor cycles.



Note: the procedure must be performed within two minutes after registering the first remote control.

The direction of rotation can be reversed over and over again by pressing the STOP button for two seconds before confirmation by pressing the PROG button for two seconds.

The direction of rotation must be confirmed by pressing the PROG button for two seconds, and then continue with the programming procedure.

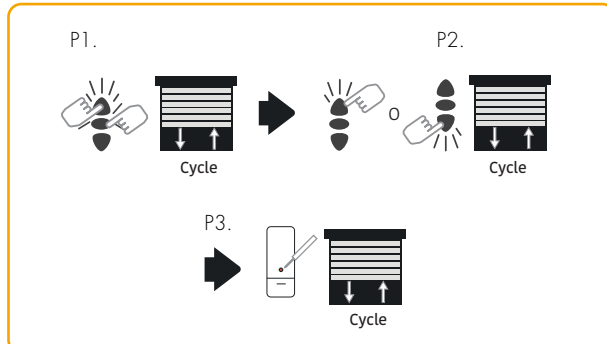
SET THE LIMITS OF STROKE

Set the upper limit.

Step 1. Press the UP and STOP button until the electric motor cycles.

Step 2. Using the UP or DOWN buttons set the upper limit to where you want it.

Step 3. Press the PROG button for two seconds or until the electric motor cycles.

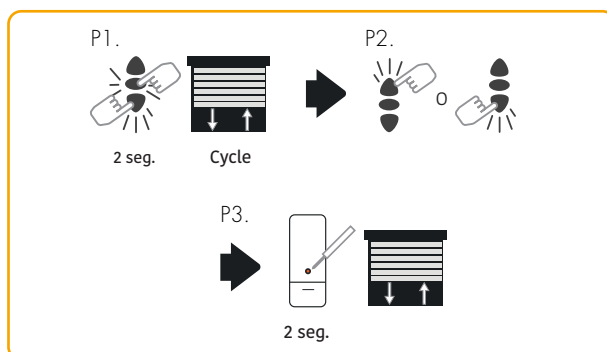


Set lower limit

Step 1. Press the DOWN and STOP button until the electric motor cycles.

Step 2. Using the UP or DOWN buttons set the lower limit where you want it.

Step 3. Press the PROG button for two seconds or until the electric motor cycles.



Note: the procedure must be performed after confirming the direction of rotation. The order of setting limits does not matter.

Before setting stroke limits, the electric motor runs in stepping mode.

USER MODE

ADD A REMOTE CONTROL

Press the PROG button with a thin tool on the remote and/or already registered channel (#1) for four seconds or until the motor cycles.

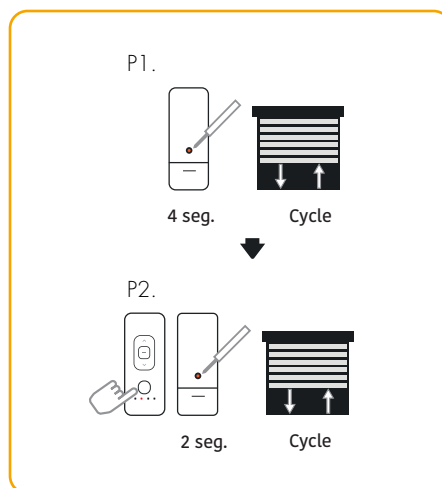
Select the new remote control and/or channel you wish to add (N°2) and press the PROG button for two seconds, until the motor cycles.

Notes: No°1 is the remote control or registered channel

No°2 is the new remote or channel

Up to 12 controls or channels can be added to the engine

The operation must be performed within 2 min



DELETE A REMOTE CONTROL

Notes: perform the same procedure of “Adding a remote control”

No°1 is the remote control or registered channel.

No°2 is the registered remote control or channel, which will be deleted.

A remote control cannot delete itself.

The operation must be performed within 2 min

MODIFY THE TRAVEL LIMITS

Modify the upper limit

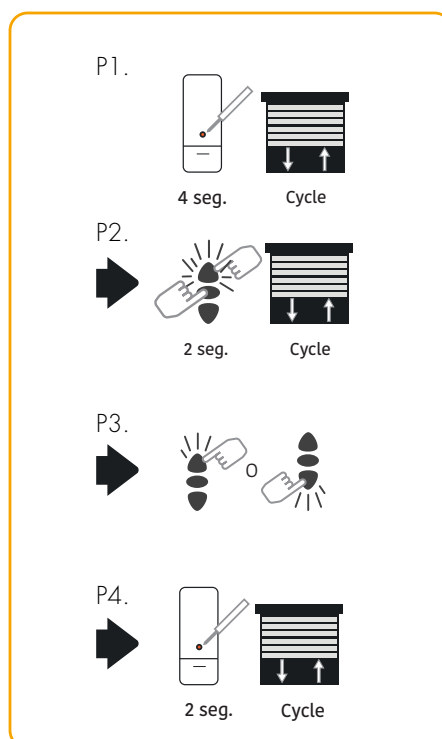
Step 1. Press the PROG button for four seconds or until the electric motor cycles.

Step 2. Press the UP and STOP button for two seconds or until the motor cycles.

Step 3. Press the UP or DOWN button, then stop the motor where you want to set the limit.

Step 4. Press the PROG button for two seconds until the electric motor cycles.

Notes: the operation must be performed within 2 minutes. The motor will step during the tuning process.





MODIFY THE TRAVEL LIMITS

Modify the lower limit

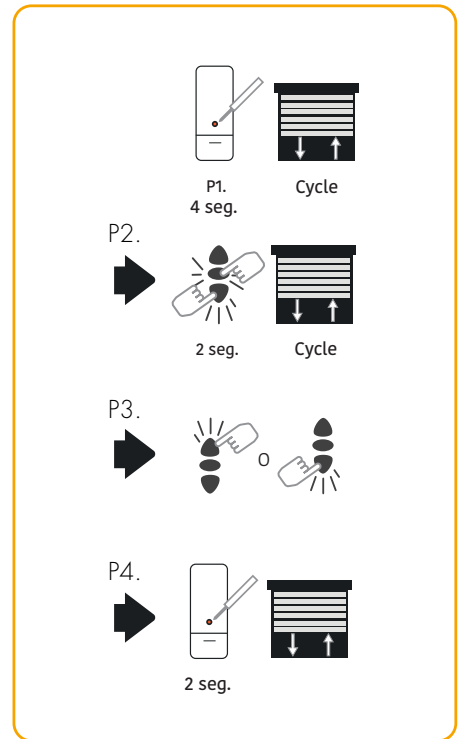
Step 1. Press the PROG button for four seconds or until the electric motor cycles.

Step 2. Press the DOWN and STOP button for two seconds or until the motor cycles.

Step 3. Press the UP or DOWN button, then stop the motor where you want to set the limit.

Step 4. Press the PROG button for two seconds until the electric motor cycles.

Note: the operation must be performed within 2 minutes. The motor will stop during the tuning process.



CHANGING THE DIRECTION OF ROTATION

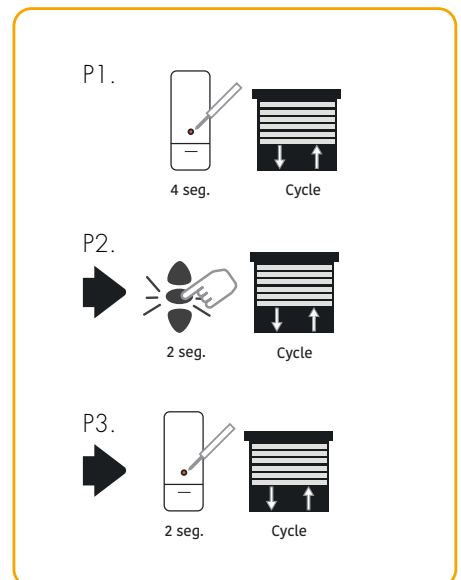
Step 1. Press the PROG button for four seconds or until the electric motor cycles.

Step 2. Press the STOP button for two seconds or until the electric motor cycles.

Step 3. Press the PROG button for two seconds or until the electric motor cycles.

Note: the operation must be performed within 2 minutes.

The direction of rotation can be reversed over and over again by pressing the STOP button for two seconds before confirmation by pressing the PROG button for two seconds.



REMOVE REMOTE CONTROLS FROM THE ENGINE MEMORY

To remove all remotes, press and hold the PROG button on the motor head until the finished product cycles twice. All remote controls will be removed.



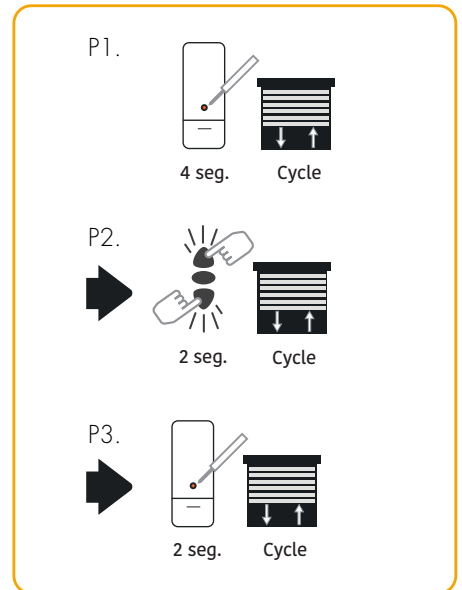
RESET THE ENGINE TO FACTORY MODE

Mode 1:

Step 1. Press the PROG button for four seconds or until the motor cycles.

Step 2. Press the UP and DOWN buttons at the same time for two seconds or until the motor cycles.

Step 3. Press the PROG button for two seconds or until the electric motor cycles.



Mode 2:

Step 1. Press and hold the PROG button on the motor head until the finished product cycles three times.

All settings will be deleted.

