

COLECCIÓN DE TELAS

SOLAR SCREEN 1% XT

- Composición || 58% PVC - 42% FIBRA DE VIDRIO
- Peso || 620 g/m²
- Ancho || 2.70 m
- Espesor || 0.80 mm
- Reacción a la luz || ISO 105 B02 - >7
- Retardante al fuego || DIN 4102 B1
- Antibacterial || ISO 20743:2007-10



White - Pearl



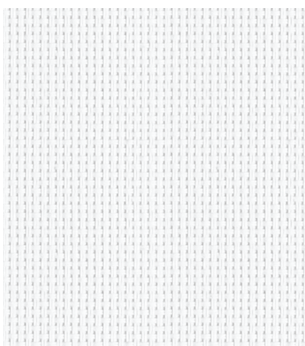
Anthracite - Pearl



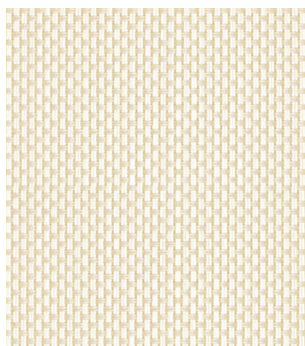
1%

SOLAR SCREEN 10% UW (ULTRA WHITE)

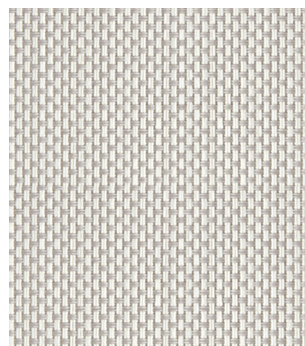
- Composición || 64% PVC - 36% FIBRA DE VIDRIO
- Peso || 300 g/m²
- Ancho || 3.20 m
- Espesor || 0.40 mm
- Reacción a la luz || ISO 105 B02 - >7
- Retardante al fuego || EN 13773:2003-1
- Antibacterial || ISO 20743:2007-10



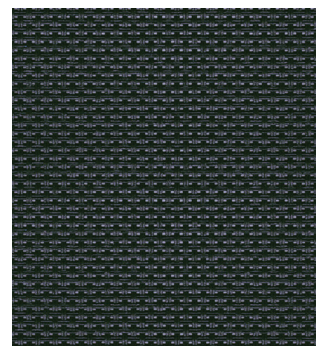
Ultra White



Ultra White - Linen



Ultra White - Pearl



Anthracite



10%